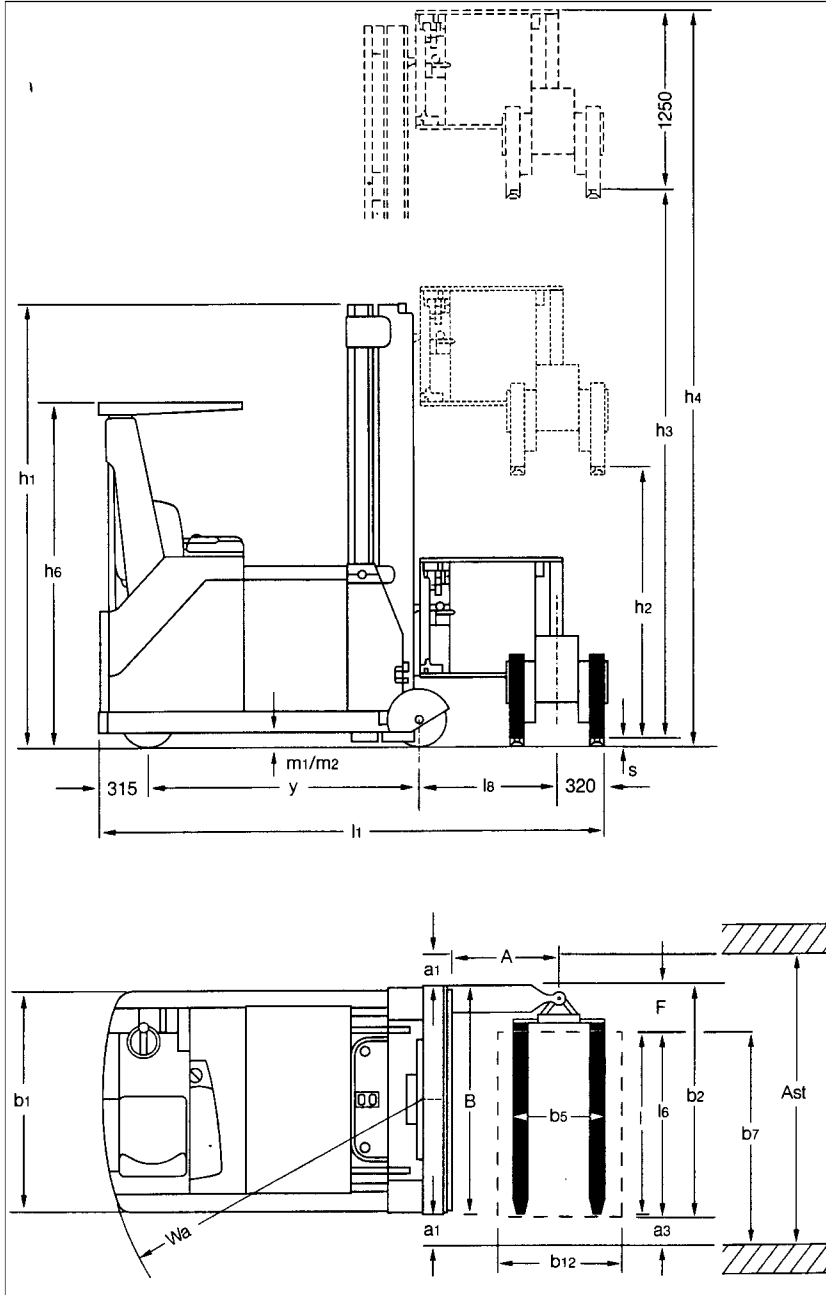


# ETL 13



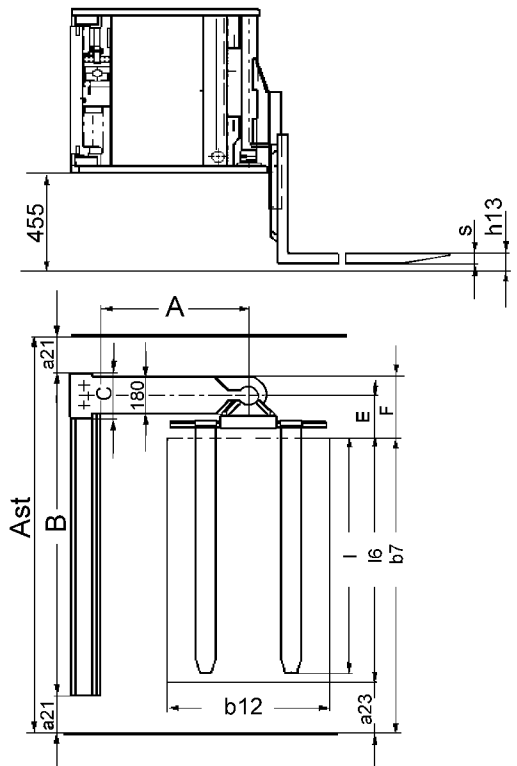
| Pos. |             |
|------|-------------|
| h6   | 2280        |
| h13  | 55          |
| • b1 | 1230 / 1530 |
| • b5 | 620 / 540   |
| • l8 | 900 / 800   |
| • A  | 700 / 600   |

| Pos. | DUPLEX ... |    |       |
|------|------------|----|-------|
| h1   | h3         | h2 | h4    |
| 2450 | 3060       | -  | 4315  |
| 2900 | 3960       | -  | 5215  |
| 3400 | 4960       | -  | 6215  |
| 3900 | 5960       | -  | 7215  |
| 4400 | 6960       | -  | 8215  |
| 4900 | 7960       | -  | 9215  |
| 5400 | 8960       | -  | 10215 |
| 5900 | 9960       | -  | 11215 |

| Pos. | TRIPLEX ... |      |       |
|------|-------------|------|-------|
| h1   | h3          | h2   | h4    |
| 2450 | 4495        | 1195 | 5750  |
| 2900 | 5845        | 1645 | 7100  |
| 3400 | 7345        | 2145 | 8600  |
| 3900 | 8845        | 2645 | 10100 |
| 4400 | 10345       | 3145 | 11600 |

| Pallet size     | Working aisle width<br>①• | Total truck length without pallet<br>• | Total truck length with pallet<br>• | Transfer aisle width with pallet<br>• ④ |
|-----------------|---------------------------|--|-------------------------------------|---|
| <b>l6 x b12</b> | <b>Ast</b>                | <b>l1</b>                              | <b>l21</b>                          | <b>Au</b>                               |
| 800 x 1200      | 1350                      | 3300                                   | 3580                                | 3870                                    |
| 1000 x 1200     | 1500                      | 3300                                   | 3580                                | 3900                                    |
| 1200 x 800      | 1700                      | 3200                                   | 3280                                | 3700                                    |
| 1200 x 1000     | 1700                      | 3200                                   | 3380                                | 3790                                    |
| 1200 x 1200     | 1700                      | 3300                                   | 3580                                | 3960                                    |
| Cage pallet     |                           |  |                                     |   |
| 835 x 1240      | 1350                      | 3300                                   | 3600                                | 3900                                    |
| 1240 x 835      | 1750                      | 3200                                   | 3300                                | 3730                                    |

Turret head dimensions as a function of working aisle width (Ast).  
Turret data in the table are valid for aisles with rail guidance and total lift heights (h3+h13).  
All dimensions are in mm.



# ETL 13

|                 |             | OM PIMESPO                               |  |            |                       |                       |
|-----------------|-------------|--|--|------------|-----------------------|-----------------------|
| CHARACTERISTICS | 1           | Manufacturer                             | Symbol                                     |            |                       |                       |
|                 | 2           | Model                                    | Denomination                               |            | ETL 13 DUPLEX         | ETL 13 TRIPLEX        |
|                 | 3           | Loading capacity                         | Q rated load                               | daN (Kg)   | 1350                  | 1350                  |
|                 | 4           | Load centre                              | C distance                                 | • mm       | 400 - 600             | 400 - 600             |
|                 | 5           | Power unit                               | Electric (battery), diesel, LP gas         |            | Electric              | Electric              |
|                 | 6           | Control                                  | Tiller (pedestrian), rider stand-on, rider |            | Seated                | Seated                |
|                 | 7           | Tyres                                    | V = solid / L = pneumatic                  | da / di    | V / V                 | V / V                 |
|                 | 8           | Wheels                                   | Number (x = drive)                         | da / di    | 1x /2                 | 1x /2                 |
|                 | 13          | Fork dimensions                          | S x e x l                                  | • mm       | 50 x 100 x 800 (1200) | 50 x 100 x 800 (1200) |
|                 | 19          | Turning radius                           | Wa   | • mm       | 2080                  | 2080                  |
| 23              | Stability   | EN 1726                                  |  | Yes        | Yes                   |                       |
| PERFORMANCES    | 24          | Speed                                    | Travelling with/without load               | Ⓢ km/h     | 9 / 9                 | 9 / 9                 |
|                 | 25          |  | Lifting with/without load                  | Ⓢ m/s      | 0.33 / 0.35           | 0.33 / 0.35           |
|                 | 26          |  | Lowering with/without load                 | m/s        | 0.4 / 0.4             | 0.4 / 0.4             |
|                 |             |  | Side shift speed with/without load         | m/s        | 0.2                   | 0.2                   |
| WEIGHT          | 30          | Weight                                   | Including battery (line 43)                | Ⓢ daN (Kg) | 5910                  | 6125                  |
|                 | 31          | Axle loads                               | With load front                            | daN (Kg)   | 1515                  | 1433                  |
|                 | 31          |  | With load reverse                          | daN (Kg)   | 5745                  | 6012                  |
|                 | 31          |  | Without load front                         | daN (Kg)   | 2215                  | 2135                  |
|                 | 31          |  | Without load reverse                       | daN (Kg)   | 3695                  | 3990                  |
| CHASSIS         | 32          | Wheels                                   | Number                                     | da / di    | 1 / 2                 | 1 / 2                 |
|                 | 33          |  | Size front wheels (polyurethane)           | mm         | 343 x 135             | 343 x 135             |
|                 | 34          |  | Size rear wheels (polyurethane)            | mm         | 360 x 152             | 360 x 152             |
|                 | 35          | Wheel base                               | Y  | mm         | 1765                  | 1765                  |
|                 | 36          | Track width                              | Centre line of wheels forw / rev (b11) •   | mm         | - /1040 - 1240        | - /1040 - 1240        |
|                 | 37          | Ground clearance                         | With load: Under the mast m1               | mm         | 40                    | 40                    |
|                 | 38          |  | With load: Centre of wheelbase m2          | mm         | 95                    | 95                    |
|                 | 39          | Brakes                                   | Foot (♦), hand (♦♦), deadman (♦♦♦)         |            | (♦) (♦♦)              | (♦) (♦♦)              |
| 40              |             | Mechanic (♦),hydraulic(♦♦),electric(♦♦♦) |  | (♦♦) (♦♦♦) | (♦♦) (♦♦♦)            |                       |
| DRIVE           | 41          | Battery                                  | Type DIN 43531 / 35 / 36 A, B, C, no       |            | 43531 - B             | 43531 - B             |
|                 | 42          |  | V / Ah (at 5 hours rate)                   | V / Ah     | 48 / 840              | 48 / 840              |
|                 | 43          |  | Minimum weight                             | daN (Kg)   | 1330                  | 1330                  |
|                 | 44          | Electric motors                          | Traction motor (KB 60)                     | KW         | 4.2                   | 4.2                   |
|                 | 45          |  | Lift motor (ED15%)                         | KW         | 15                    | 15                    |
|                 | 51          | Drive control                            | Type                                       |            | Electronic            | Electric              |
|                 | 54          | Transmission                             | Type                                       |            | Stepless              | Stepless              |
| 55              | Noise level | Driver's seat                            | dB (A)                                     | < 70       | < 70                  |                       |

Data are supplied for information only and are not meant to be binding

- Ⓢ Working aisle width : distance between loads on the racks
- Dimensions for pallet 800x1200 (l6 x b12) forking side 1200/800, rail guidance and low lift height
- Ⓢ Values for lowerest mast
- f **With inductive guidance:** forks "in stacking position" up to h3 = 4000 mm : max traction speed;  
h3 > 4000 mm only reduced speed is available if consent button is depressed.  
Forks "out of stacking position": only reduced speed is available for positioning if consent button is depressed.
- With wire guidance:** forks "in stacking position" up to h3 = 2500 mm : max traction speed;  
h3 > 2500 mm only reduced speed is available if consent button is depressed.  
Forks "out of stacking position": only reduced speed is available for positioning if consent button is depressed.
- Free ranging:** forks "in stacking position" up to h3 = 500 mm : max traction speed;  
h3 > 500 mm only reduced speed is available if consent button is depressed.  
Forks "out of stacking position": only reduced speed is available for positioning if consent button is depressed.
- ④ With wire guidance: dimensions + 60 mm.
- ... **Au** : the dimensions given are minimum size (including 2 x a/2 =200 mm) and referred to rail guided mode. For inductive guidance, values must be increased 500 / 1000 mm for a quick aisle transfer and for picking up on the wire.